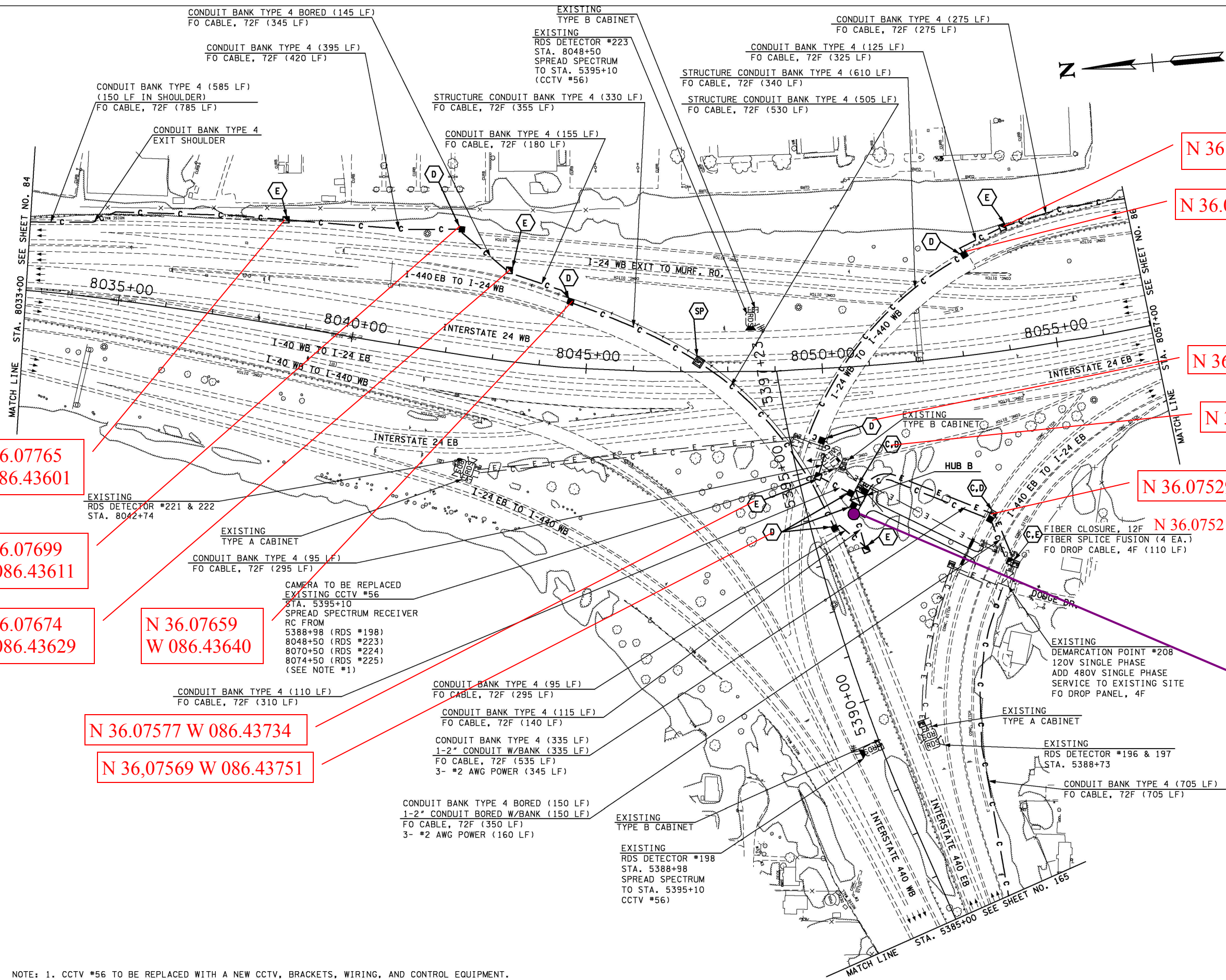


TENNESSEE D.O.T.
DESIGN DIVISION
FILE NO.

TYPE	YEAR	PROJECT NO.	SHEET NO.
CONST.	2007	CM-098-3(14)	85
As built	2010		



N 36.07765
W 086.43601

N 36.07699
W 086.43611

N 36.07674
W 086.43629

N 36.07659
W 086.43640

N 36.07577 W 086.43734

N 36.07569 W 086.43751

N 36.07498 W 086.43625

N 36.07516 W 086.43632

N 36.07573 W 086.43718

N 36.07558 W 086.43727

N 36.07529 W 086.43762

N 36.07521 W 086.43787

N 36.07566
W 086.43739
Conduit Splice

NOTE: 1. CCTV #56 TO BE REPLACED WITH A NEW CCTV, BRACKETS, WIRING, AND CONTROL EQUIPMENT.

STATE OF TENNESSEE
DEPARTMENT OF TRANSPORTATION
ITS LAYOUT
I-24/I-440
STA. 8033+00 TO
STA. 8057+00 &
STA. 5385+00 TO
STA. 5397+23
SCALE: 1"=100'